



# Cooperation partner: Why does a forest administration engage in forest pedagogy?

## Using the example of Wald und Holz NRW



[www.wald-und-holz.nrw.de](http://www.wald-und-holz.nrw.de)



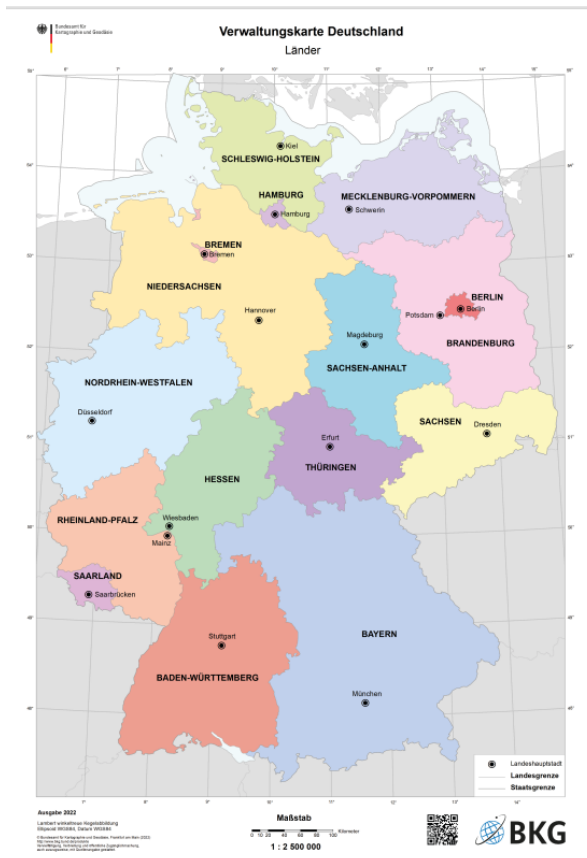
# Contents

- Introduction
- I. Component: Education of sustainable development (ESD)
- II. Component: Legal Basis
- III. Component: Social mission
- Summary





# Introduction – Federal State Forests of North Rhine Westphalia



- Consisting of the Ministry of Agriculture and Consumer Protection of the State of North Rhine-Westphalia<sup>1</sup> and Wald and Holz NRW<sup>2</sup>
- Area of responsibility is the whole of North Rhine-Westphalia

<sup>1</sup> Ministerium für Landwirtschaft  
und Verbraucherschutz des  
Landes Nordrhein-Westfalen



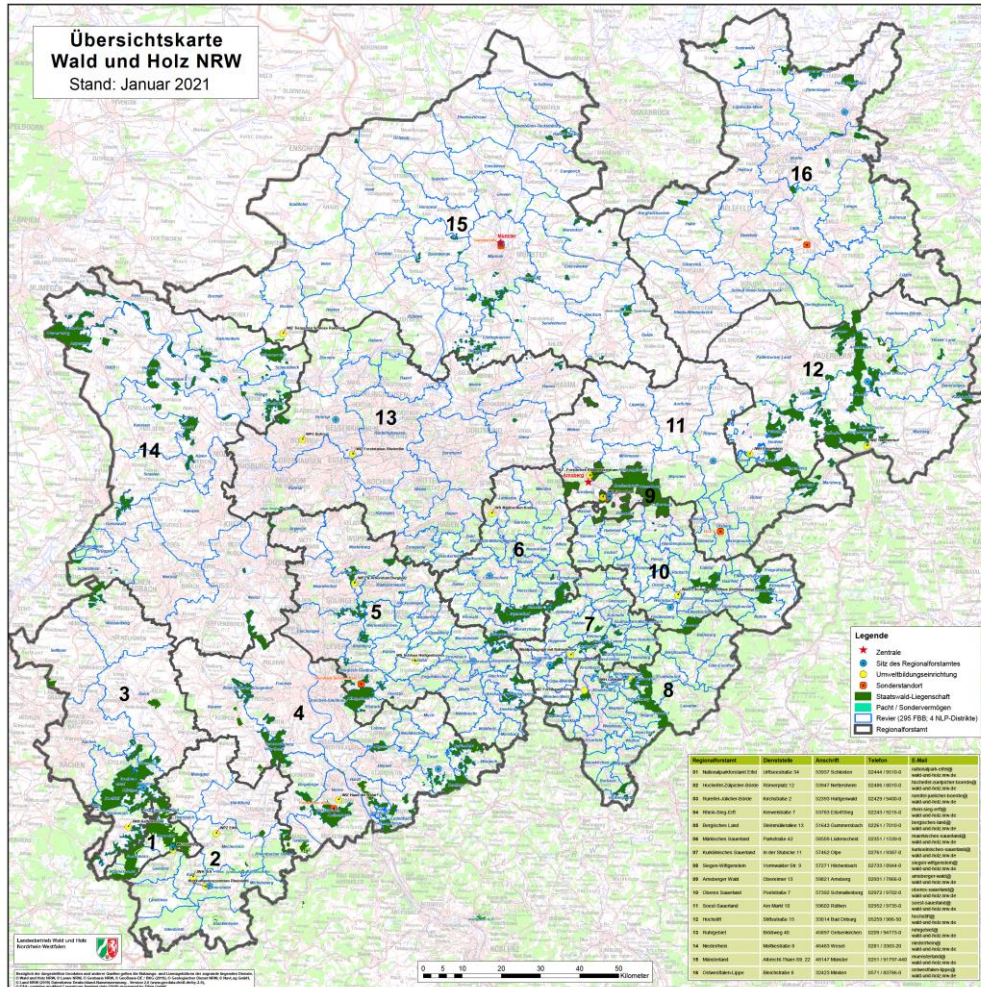
<sup>2</sup> Landesbetrieb Wald und Holz  
Nordrhein-Westfalen



[Ministerium für Landwirtschaft und Verbraucherschutz NRW](#)  
[Startseite | Wald & Holz \(nrw.de\)](#)



# Introduction – Wald und Holz NRW

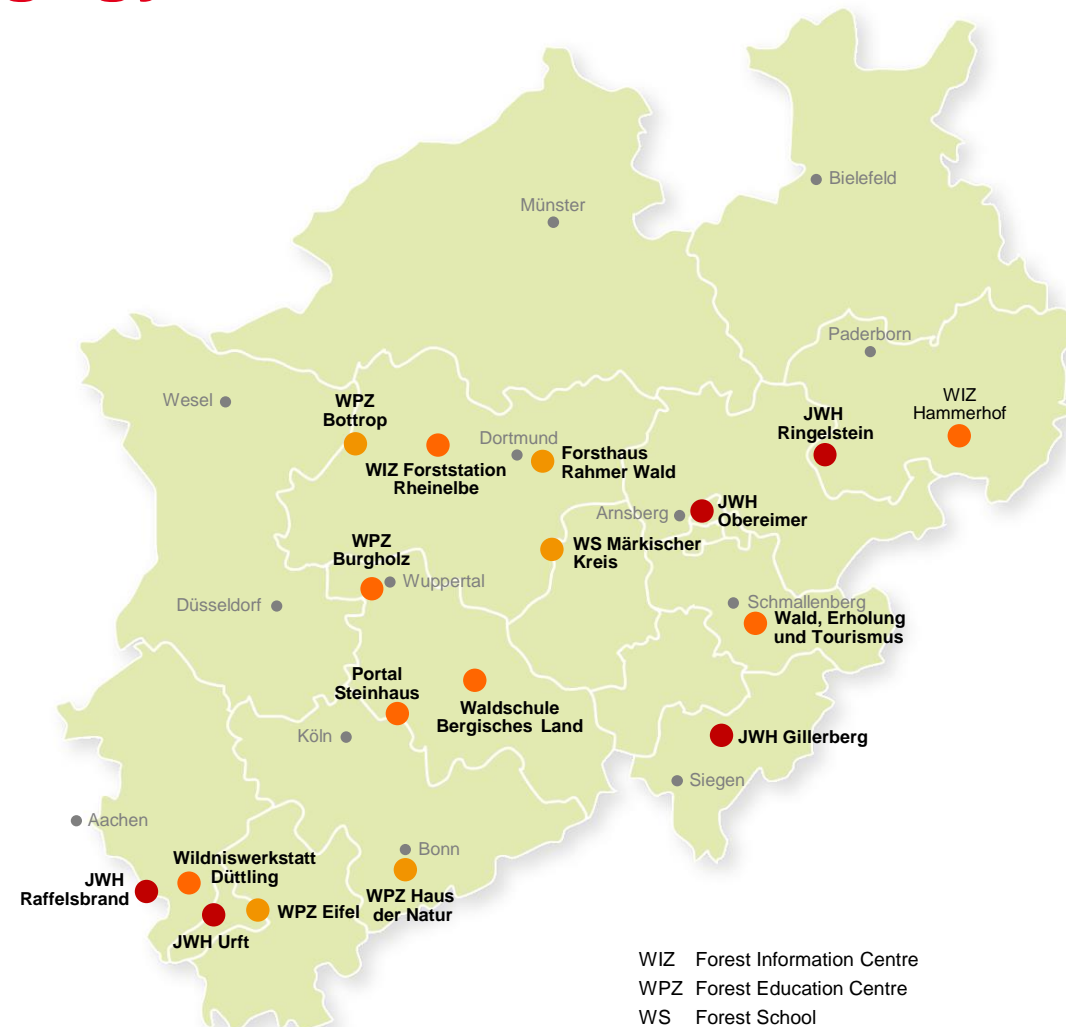


- Structure of Wald und Holz NRW:
  - 2 Headquarters in Münster and Hünsten
  - 16 Regional forest offices
  - ~ 300 forestry districts



# Introduction – Forest Pedagogy of Wald und Holz NRW

- Forest pedagogy in the Regional Forest Offices all over NRW
- Youth-Forest-Homes
  - JWH Ringelstein
  - JWH Obereimer
  - JWH Gillerberg
  - JWH Urft
  - JWH Raffelsbrand
- Forest education institutions
  - WIZ Forststation Rheinelbe
  - WIZ Hammerhof
  - WPZ Burgholz
  - Portal Steinhaus
  - Waldschule Bergisches Land
  - Wildniswerkstatt Düttling
- Cooperation's
  - WPZ Bottrop
  - Forsthaus Rahmer Wald
  - WS im Märkischen Kreis
  - WPZ Eifel
  - WPZ Haus der Natur





## I. Component: Education for Sustainable Development (ESD)



- UN



- Federal Republic of Germany
  - Action Plan



- North Rhine Westphalia
  - Country Strategy ESD – learning Future (2016 – 2020)

# I. Component: Education for Sustainable Development (ESD)



- strategic fields of action of the Country Strategy ESD – learning Future (2016 – 2020)
  - elementary education
  - Schools / Colleges / Universities
  - vocational education
  - extracurricular education
    - Target group: people of all ages
    - Partners: extracurricular educational institutions (for example Forest and Timber NRW)
    - Subjects: contents of formal education
    - Networking: with formal education and extracurricular institutions

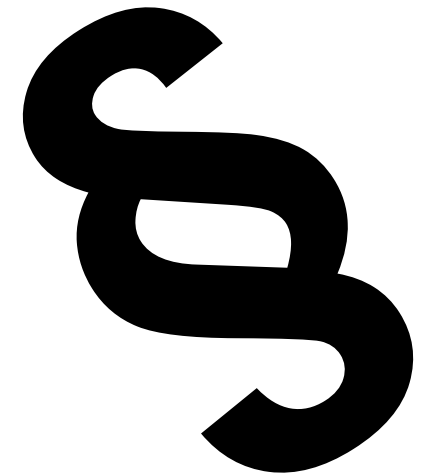
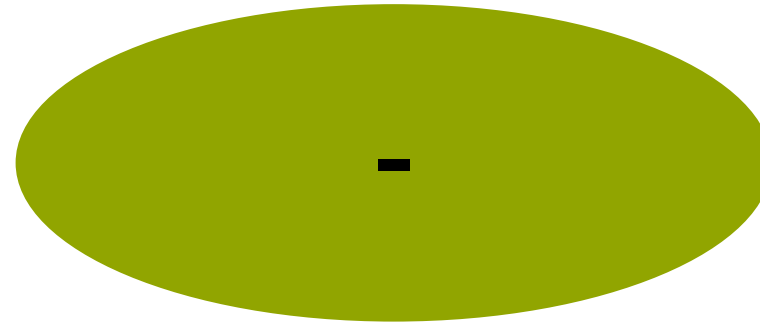


## II. Component: Legal basis

Law for the  
forests in the  
Federal Republic  
of Germany



Laws of the  
federal states





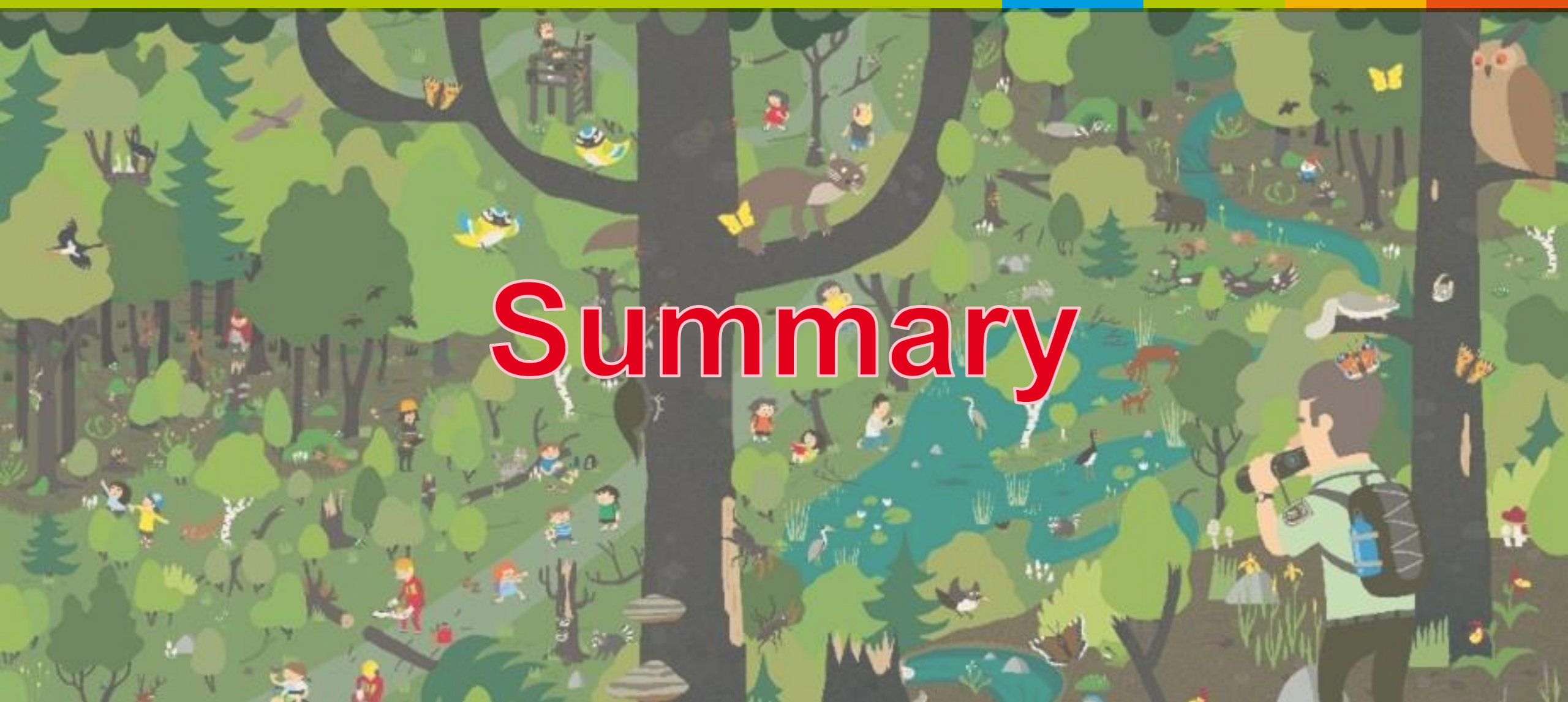


## III. Component: Social mission – Social development Goals (SDGs)



### III. Component: Social mission – the children







# Thank you for your attention!

